



Franklin College of Arts and Sciences  
UNIVERSITY OF GEORGIA

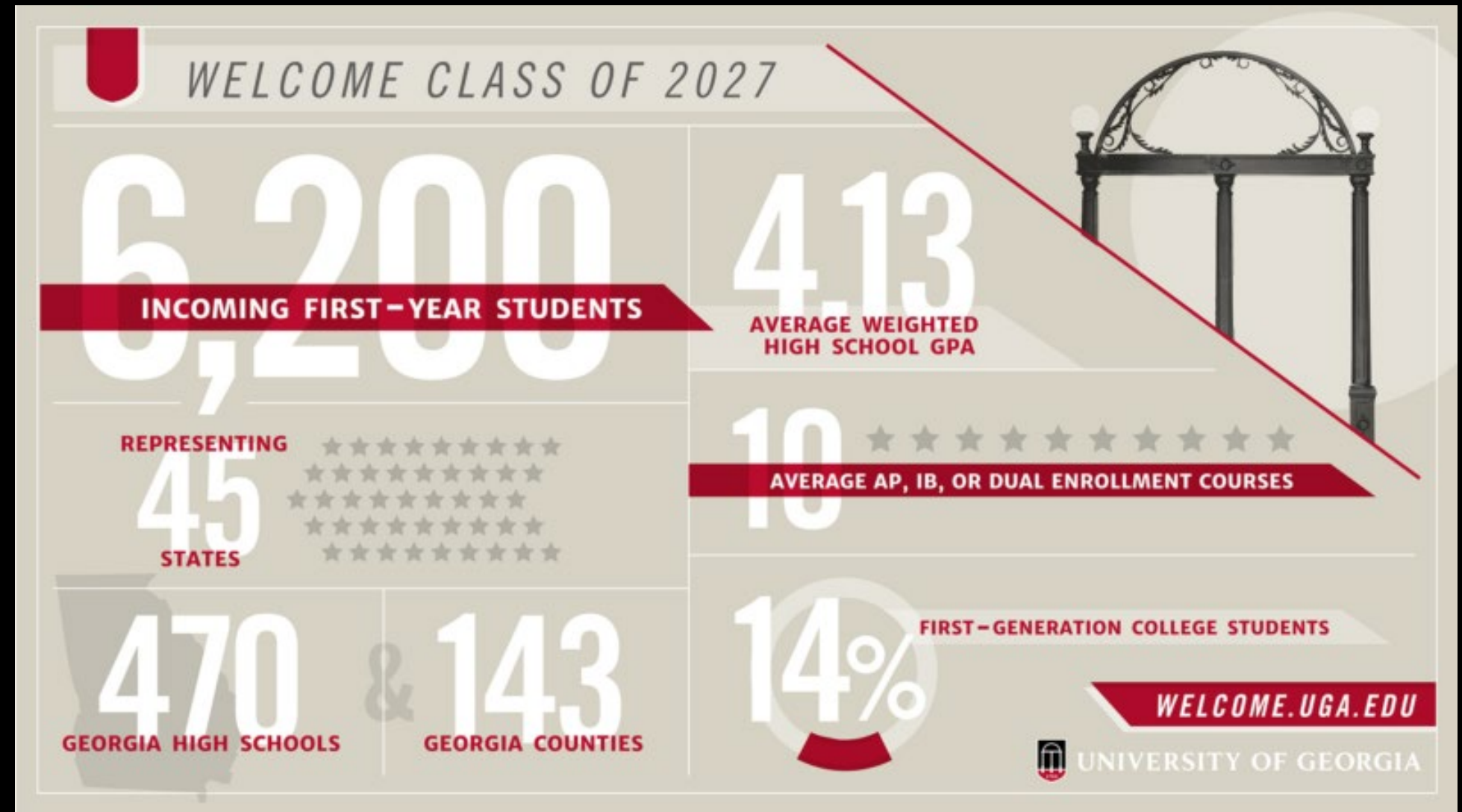
# Welcome Scholars!

# It's a Different World!

- Undergraduate Enrollment: ~31,000
- Freshmen Class Size: 6,200+
- Percentage Pursuing Franklin majors: 34%
- Percentage Who Study Abroad: 25%

## The University of Georgia has...

- 17 Separate Schools and Colleges
- 143 Major Options
- Over 460 Buildings



For more statistics, see: <https://oir.uga.edu/factbook/>



# Franklin College of Arts & Sciences

*“The heart of UGA’s liberal arts learning environment, the Franklin College of Arts and Sciences provides instruction in every classical discipline and all branches of empirical inquiry. Critical thinking skills, from languages and literature to biological sciences, build the foundation for every profession as they empower students to be informed, engaged citizens.”*

- 30 Separate Departments
- 80+ Degree Programs
- 50% of Credit Hours @UGA Housed in Franklin
- Instruction in 23 Different Foreign Languages
- 26 Study Abroad Programs on Five Continents

For recent accomplishments, see: <https://www.franklin.uga.edu/accomplishments>



# Liberal Arts & Sciences Education

Types of undergraduate degrees:

- **AB:** Bachelor of Arts – Humanities and Social Sciences
- **BS:** Bachelor of Science – Biological, Physical, and Computational Sciences
- **BFA:** Bachelor of Fine Arts – Studio Art, Art Education, and Dance
- **BMUS:** Bachelor of Music – Five types of Music degrees
- **BSCHEM:** Specialized degree in research Chemistry

All BS and AB degree-seeking students must take classes in a variety of areas to receive a true liberal arts and sciences education:

<https://osas.franklin.uga.edu/franklin-college-degree-requirements>



# Biological Sciences

Spanning the broad field of natural sciences concerned with the study of life and living organisms. All majors are housed within the Division of Biological Sciences (except Psychology). The department of Entomology (College of Agriculture and Environmental Sciences) and the Odum School of Ecology also contribute faculty and graduate students towards BIOL course instruction.

- PROGRAMS:

- [Biochemistry and Molecular Biology - B.S.](#)
- [Biology - B.S.](#)
- [Cellular Biology - B.S.](#)
- [Genetics - B.S.](#)
- [Microbiology \(Also Offered at Griffin\) - B.S.](#)
- [Plant Biology - B.S.](#)
- [Psychology - B.S.](#)

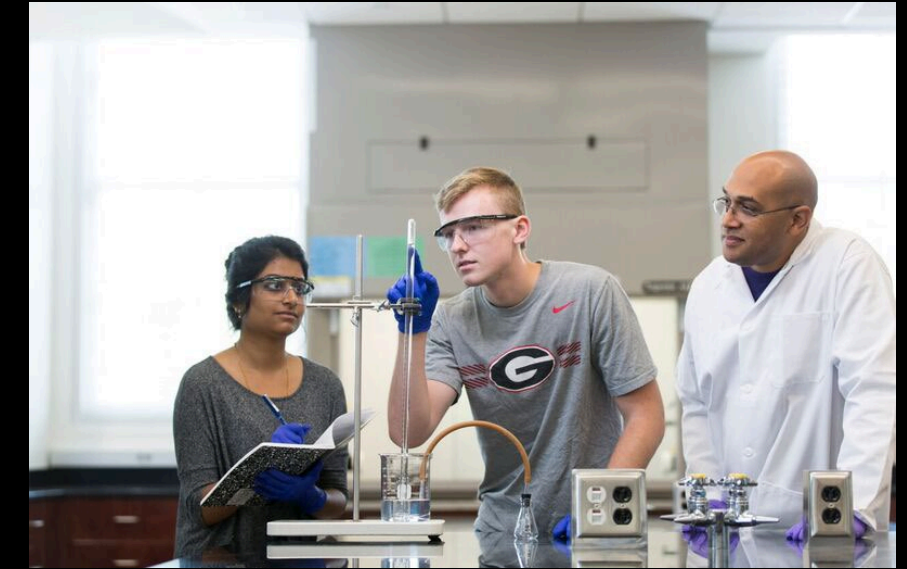


# Physical & Computational Sciences

Providing a framework for the comprehensive study of the physical world and the chemistry of nature to academic disciplines primarily concerned with numerical methods, the Division of the Physical & Mathematical Sciences comprises six departments offering eleven majors.

## PROGRAMS:

- [Astrophysics - B.S.](#)
- [Atmospheric Sciences - B.S.](#)
- [Chemistry - B.S.](#)
- [Cognitive Science - A.B.](#)
- [Computer Science - B.S.](#)
- [Data Science - B.S.](#)
- [Geography - B.S.](#)
- [Geology - B.S.](#)
- [Mathematics - B.S.](#)
- [Ocean Science - B.S.](#)
- [Physics - B.S.](#)
- [Statistics - B.S.](#)



# Humanities

Forming the bedrock of human culture from modern languages and literature to philosophy and religion, the Division of the Humanities comprises eight departments, and a host of concentrations and majors with more than 2,000 students from around the world enrolled in our AB, MA and PhD programs.

## PROGRAMS:

- [African American Studies - A.B.](#)
- [Arabic - A.B.](#)
- [Asian Languages and Literature - A.B.](#)
- [Classics - A.B.](#)
- [Cognitive Science - A.B.](#)
- [Comparative Literature and Intercultural Studies - A.B.](#)
- [English - A.B.](#)
- [French - A.B.](#)
- [German - A.B.](#)
- [History - A.B.](#)
- [Latin American and Caribbean Studies - A.B.](#)
- [Linguistics - A.B.](#)
- [Philosophy - A.B.](#)
- [Religion - A.B.](#)
- [Romance Languages - A.B.](#)
- [Russian - A.B.](#)
- [Spanish - A.B.](#)



# Social Sciences

Investigating society and the relationships among individuals within a society, the Division of the Social Sciences is comprised of branches of knowledge reaching from the Age of the Enlightenment into the 21st century of human activity and existence.

## PROGRAMS:

- [African American Studies - A.B.](#)
- [Anthropology - A.B.](#)
- [Cognitive Science - A.B.](#)
- [Communication Studies - A.B.](#)
- [Criminal Justice - A.B.](#)
- [Geography - A.B.](#)
- [Latin American and Caribbean Studies - A.B.](#)
- [Psychology - B.S.](#)
- [Sociology - A.B.](#)
- [Women's Studies - A.B.](#)





# Fine Arts

Connecting our campus community with a wide variety of cultural programming, the Fine and Performing Arts boasts of a legacy of opportunity for student-artists and audiences.

## PROGRAMS:

- [Art Degrees and Emphases](#) (14 Area of Emphasis Options)
- [Dance - A.B.](#)
- [Dance - B.F.A.](#)
- [Film Studies - A.B.](#)
- [Music Degrees](#) (6 Degree Options, 20 Instrument Emphases)
- [Theatre - A.B.](#)



# Explore Your Options!

- [Franklin Major Overview Pages](#)
- Franklin College Departmental Websites
- [Career Center Resources](#)
- ...but most importantly...



# THE BULLETIN!

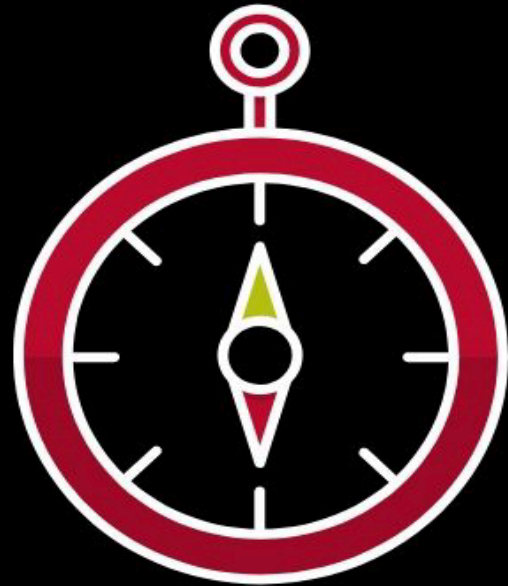
The University of Georgia's undergraduate catalogue is known as the **UGA Bulletin** and is your centralized resource for all of the university's degree and graduation requirements. In it you will find:

- [Undergraduate Majors](#)
- [Course Descriptions](#)
- Degree Requirements
- [Minors](#) and [Certificates](#)
- [Academic Policies](#)

The screenshot shows the UGA Bulletin website. At the top, there is a red header with the UGA logo and the text "UGA Bulletin". Below the header are three navigation tabs: "MAJORS", "COURSES", and "UNIVERSITY INFORMATION". A search bar with the text "Custom Search" and a magnifying glass icon is located to the right of the tabs. Below the search bar is a large banner image of a campus scene with trees and a building. Below the image is a red banner with the text "Welcome to the 2019-2020 UGA Bulletin" and "The official University of Georgia resource for majors, courses, and academic information". To the right of the banner is a "NEWS" section with a red arrow icon and the text "NEWS". Below the news section are three links: "Let us know what you think of the UGA Bulletin", "General Education Core Curriculum - Effective Fall 2008", and "Bulletin Worksheet". Below the banner and news section are three main content areas: "Explore Majors", "Search Courses", and "Compare Majors". Each area has a small icon (globe, magnifying glass, and arrows respectively) and a "Start Now" button. To the right of these areas is a "Quicklinks" section with a list of links: "Academic Calendar", "Admissions", "Bulletin Archives", "Bulletin Deadlines", "Campus Map", "Daily Class Schedule", "Final Exam Conflicts", "Site Index", "Athena", and "Transfer Equivalency Search".



# 120 Hours of Academic Credit



## Establish Foundations

48-60 Academic Credit hours  
satisfying System, College  
and UGA Requirements

First and Second Years



## Master Your Skills

24-67 Academic Credit Hours  
satisfying Major and major-  
related requirements

Third and Fourth Years



## Broaden Your Worldview

0-36 Academic Credit Hours  
of General Electives to meet  
Graduation Requirements



# General Degree Requirements



## Major Requirements

## Franklin College Requirements



Foreign Language, Literature, Fine Arts/Philosophy/Religion, Biological and Physical Sciences, History, Social Sciences, and Multicultural

## University of Georgia Requirements

Cultural Diversity, Physical Education, Environmental Literacy, Experiential Learning

## University System of Georgia Requirements

Core Requirements, US/GA History and Constitution



# Have You Already Earned College Credit?

Many “core” (foundational) classes can be exempted through AP, IB, and dual-enrollment (transfer) credit. The result of this is that you have the opportunity to add to your academic program (minors, certificates, etc...) or possibly graduate early!

## UGA AP Credit Equivalences

AP Score	Spanish: Spanish Literature & Culture
3	SPAN 1002 (4 credit hours)
4	SPAN 1002 (4 credit hours), SPAN 2001 (3 credit hours)
5	SPAN 1002 (4 credit hours), SPAN 2001 (3 credit hours), SPAN 2002 (3 credit hours)

AP Score	Psychology
3	PSYC 1101 (3 credit hours)
4	PSYC 1101 (3 credit hours)
5	PSYC 1101 (3 credit hours)

AP Score	Statistics
3	STAT 2000 (4 credit hours)
4	STAT 2000 (4 credit hours)
5	STAT 2000 (4 credit hours)

## IB Equivalences

IB Level and Score	Psychology credit earned
HL4	PSYC 1101 (3 credit hours)
HL5	PSYC 1101 (3 credit hours)
HL6	PSYC 1101 (3 credit hours)
HL7	PSYC 1101 (3 credit hours)
SL5	PSYC 1101 (3 credit hours)
SL6	PSYC 1101 (3 credit hours)
SL7	PSYC 1101 (3 credit hours)

### Group 4: Experimental Sciences

IB Level and Score	Biology credit earned
HL4	BIOL 1103 + BIOL 1103L (4 credit hours)
HL5	BIOL 1103 + BIOL 1103L (4 credit hours)
HL6	BIOL 1107 + BIOL 1107L (4 credit hours) and BIOL 1108 + BIOL 1108L (4 credit hours)
HL7	BIOL 1107 + BIOL 1107L (4 credit hours) and BIOL 1108 + BIOL 1108L (4 credit hours)

## Transfer Equivalency

CHEM	
Transferring Course	UGA Course
CHEM1151	CHEM 1110
CHEM1151L	CHEM 1110L
CHEM1152	CHEM 2100
CHEM1152L	CHEM 2100L
CHEM1211	CHEM 1211
CHEM1211H	CHEM 1211
CHEM1211H	CHEM 1GXX
CHEM1211K	CHEM 1211
CHEM1211K	CHEM 1211L
CHEM1211L	CHEM 1211L
CHEM1212	CHEM 1212

[AP Equivalences](#)

[IB Equivalences](#)

[Transfer Equivalences](#)



# Preparing for Change

*UGA's Curriculum is rigorous, but there's help!*



- **Division of Academic Enhancement:**
  - Individual and group tutoring in most subjects
  - Academic Coaching to help with time management and study skills
  - UNIV classes to help adjust to UGA
  - Online tutorials for quick help
- **Writing Centers** at multiple locations on campus
- **Mathematics Study Hall** offered for all MATH courses
- **Conversation Tables** for many languages
- **Pre-Professional Office:** To assist with getting into professional schools after graduation (law, health, etc...)





# Franklin Residential College

*Franklin College of Arts and Sciences*

**UNIVERSITY OF GEORGIA**

RUTHERFORD HALL

DR. MONTGOMERY WOLF, DIRECTOR

DR. DANIELLE BOSTICK, ACADEMIC ADVISOR IN RESIDENCE





Student led - Faculty & staff mentored  
95 students, all years and majors  
Leadership opportunities  
Volunteered & paid positions - experiential learning  
Academic, Service and Social programs  
Points and reward system for participating

FYOS 1001 at Rutherford with first year students in the program

Cookie nights

Talk and tea with faculty speakers

Community service

Professional development opportunities

Annual trip to Sapelo Island

Day trips off camps

Community garden

Board game and movie nights

Wellness activities

And more!

Apply on [frc.uga.edu](http://frc.uga.edu)

Questions? Email us at

[frc@uga.edu](mailto:frc@uga.edu)

Follow us on Instagram (@frc\_uga)

to stay updated!



# CAREER RESOURCES

For UGA students!



# UGA CAREER CENTER!

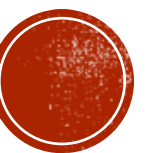
The screenshot shows a web browser window with the URL <https://career.uga.edu/students>. The browser's address bar and tabs are visible at the top. The website header includes the University of Georgia Career Center logo and a navigation menu with links for STUDENTS, ALUMNI, FACULTY/STAFF, EMPLOYERS, CAREER OUTCOMES, FAQ, and ABOUT US. A prominent red banner below the header reads "Students".

The main content area features a central heading: "Welcome to the UGA Career Center". Below this, a paragraph states: "The Career Center provides a wide variety of services to UGA students and alumni, including Major & Career Exploration, Resume & Cover Letter Critiques, Job & Internship Searching, and much more. Follow the links below to explore our services and resources."

At the bottom of the main content area, there are six service categories, each represented by a circular icon and text:

- Explore Majors/Careers**: Represented by a red circle with a white rocket icon.
- Resumes/Cover Letters**: Represented by a black circle with a white document icon.
- Job/Internship Search**: Represented by a red circle with a white magnifying glass icon.
- Networking**: Represented by a black circle with a white group of people icon.
- Interview Preparation**: Represented by a red circle with a white list icon.
- Grad School Preparation**: Represented by a black circle with a white building icon.

The Windows taskbar is visible at the bottom of the screenshot, showing the system tray with the date and time (4:32 PM, 4/9/2023) and the weather (62°F Sunny).



- Students can choose mentors based on all kinds of criteria
  - Major, identification, location, career, age, etc.
- Every single student I know who has taken part in the program has been thankful for the experience
  - And some students have gotten internship leads or internships from their mentors

Mentor Program  
UNIVERSITY OF GEORGIA

Create account Sign In

Students Mentors Testimonials Resources FAQ Events Team

## STUDENTS

The moment when you realize  
SOMEONE IS IN YOUR CORNER.

Create a Student Account

UGA Mentor Program | Beom... Watch later Share

Connecting with your Bulldog family can help you get ahead in life and career, but where do you even start? The UGA Mentor Program helps connect the Dawgs, one meaningful relationship at a time. With over 4,500 diverse, experienced UGA Mentors (alumni, faculty, and staff), there are over 4,500 opportunities for students to connect based on interests, needs, and goals. There are also [helpful guidelines](#), [icebreakers](#) and [resources](#) on this site to guide you along the way.

### What's the commitment?

- 16-week mentorship (1-2 hours per month)
- [Quick chats](#) (15-30 minutes)
- [Ask questions!](#)
- Express gratitude

### Quick chats more your style?

If a 16-week mentorship doesn't suit your schedule, connect with a UGA Mentor for a 15-30-minute conversation around work, life and career. You may even find that you two would make a good mentoring match!

### How to get started

**CREATE PROFILE**  
Log in with LinkedIn to pull your profile picture and email or set up your account via email. Either way you get to share your interests, experiences and background to give mentors context.

**CUSTOMIZE YOUR SEARCH**  
Mentees can request the right mentor for them based on a variety of criteria including: industry, identity, major, location and more.

**CONNECT FROM ANYWHERE**  
You can connect with your mentor either virtually or in person, making it easier to fit into your busy schedule.

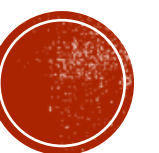
- [FAQS](#)
- [RESOURCES](#)
- [MENTEE NEWSLETTER](#)
- [EVENTS](#)

RESOURCES: Documents & Links Videos & Podcasts FAQs

# AND LASTLY



- Christine Lasek-White, Professor in the English Department and **Internship and Career Coordinator for the Humanities**
- Prior to getting my MFA in Creative Writing, I worked for 8 years in Detroit as a web journalist and public relations professional
  - With only a bachelors in English
- So I know what it's like to go on the job market armed only with a humanities degree
- And if I could do you, you can, too
  - I promise!
- Email me for an appointment: [cmlwhite@uga.edu](mailto:cmlwhite@uga.edu)





Franklin College of Arts and Sciences  
UNIVERSITY OF GEORGIA

# Questions?